



STUDENT SATISFACTION SURVEY 2023 - 2024

Internal Quality Assurance Cell
Jyoti Nivas College Autonomous
Hosur Road
Bangalore 560095

INTRODUCTION

The Student Satisfaction Survey (SSS) is an important quality assurance parameter mandated by the National Assessment and Accreditation Council (NAAC). The report is taken once a year in a completely confidential manner. The students are asked to fill out the on-line survey, and the results are tabulated as follows:

- The options are converted into proportions out of 360 and expressed as a pie chart. The data table for the pie chart is provided below to ensure no ambiguity in interpretation. The data has been rounded off to two decimal points.
- The obtained data is analysed to give a split bar graph categorised into streams so that it is easy to identify if a particular parameter concerns a particular stream. This enables the institution to act better upon any parameters that require action more efficiently.

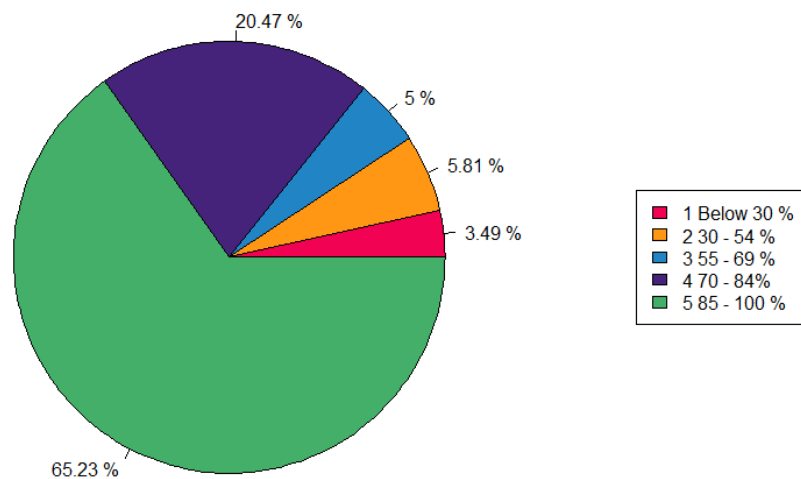
The following questions were used to collect data:

1. How much of the syllabus was covered in the semester?
2. How well are the teachers able to communicate to you?
3. How fair is the internal assessment process by the teachers?
4. The institute takes active interest in promoting internship, student exchange and field visit opportunities for students.
5. Are you informed of expected competencies, course outcomes and programme outcomes?
6. Your mentor/Teacher does a necessary follow up with you regarding assigned tasks.
7. Teachers illustrate concepts through examples and applications.
8. Teachers are able to identify your weaknesses and help you to overcome them.
9. The institution makes an effort to engage students in the monitoring, review and continuously quality improvement of the teaching learning process.
10. Teachers encourage you to participate in extracurricular activities.
11. Efforts are made by the institute/teachers to inculcate soft skills, life skills and employability skills to make you ready for the world of work.
12. What percentage of your teachers use ICT tools such as LCD projector, multimedia etc. while teaching?
13. The overall quality of teaching-learning process in your institute is very good.
14. Does the library have sufficient reference books/journals/resources in your subject domain?
15. Have you availed the grievance mechanism? if YES, has your concern been addressed?
16. Do you want the college to offer more programmes in different streams?
17. How satisfied are you with the cleanliness of your campus?
18. How satisfied are you with your interaction with the administrative staff?
19. How comfortable and safe do you feel on campus?

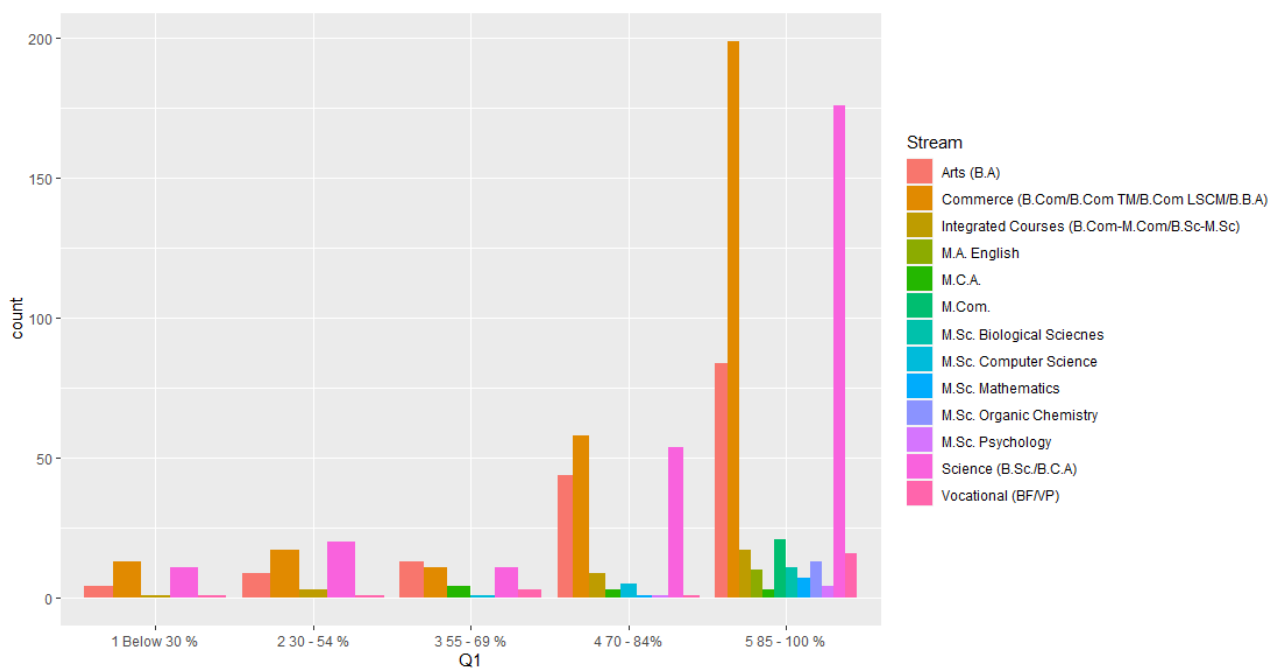
Each question was provided with five options of which the student chose one.

QUESTION 1

How much of the syllabus was covered in the semester?

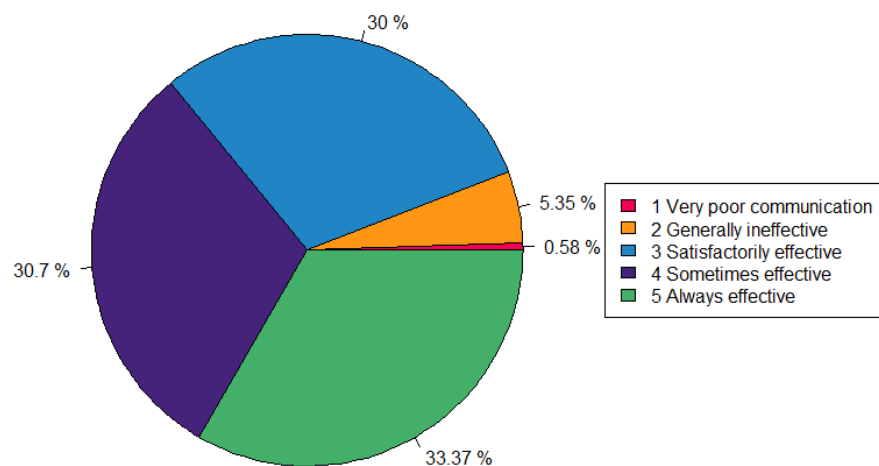


Option	Below 30%	30 - 54 %	55 - 69 %	70 - 84 %	85 - 100 %
Response (%)	3.49	5.81	5.00	20.47	65.23

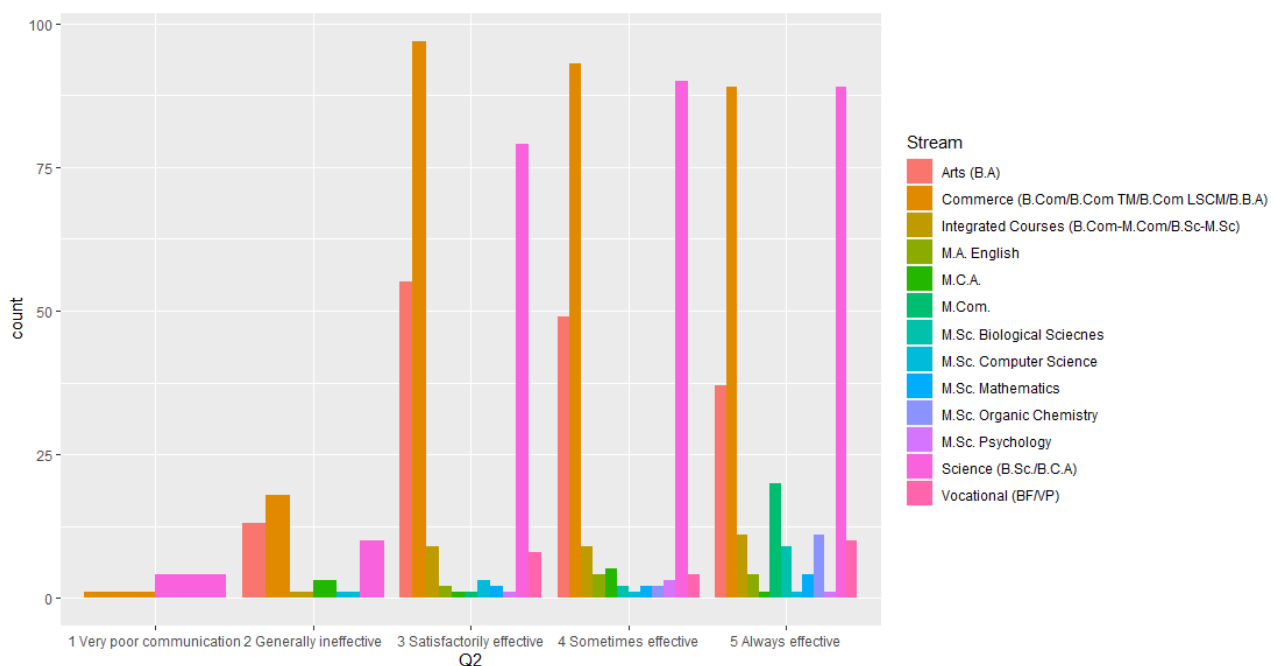


QUESTION 2

How well are the teachers able to communicate to you?

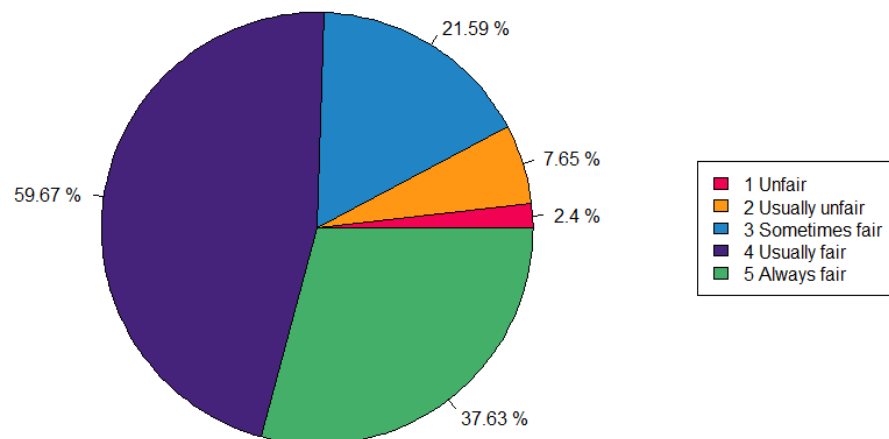


Option	Very poor communication	Generally ineffective	Satisfactorily effective	Sometimes effective	Always Effective
Response (%)	0.58	5.35	30.00	30.70	33.37

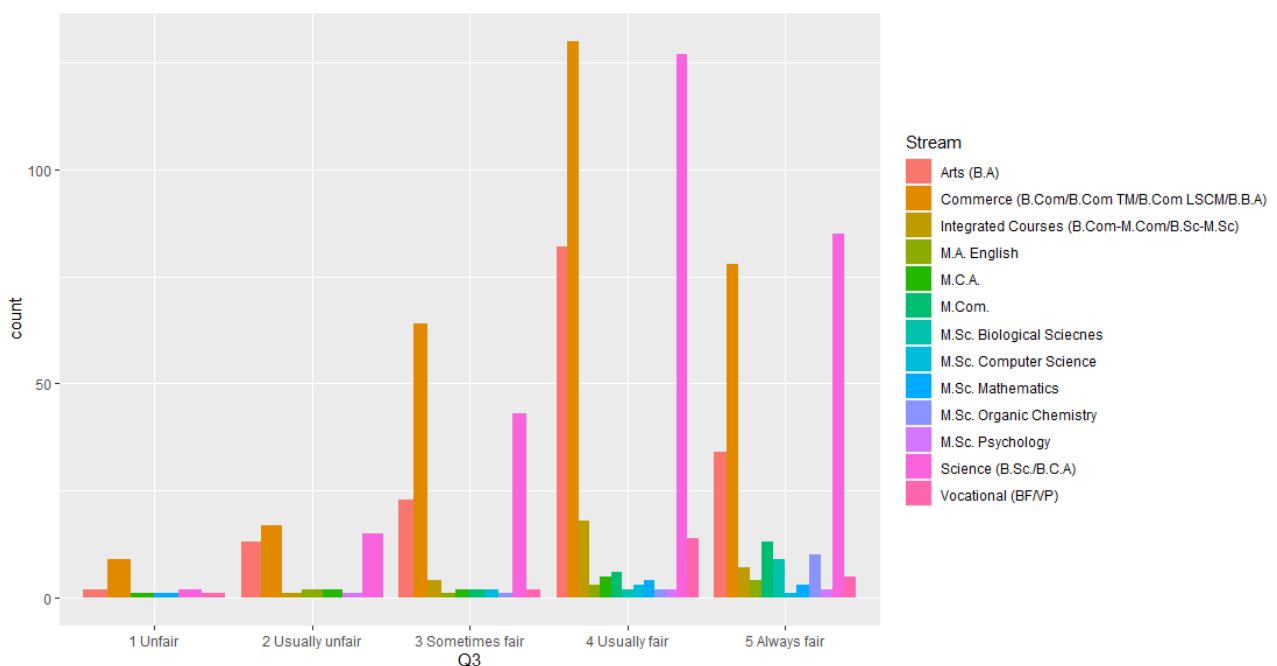


QUESTION 3

How fair is the internal assessment process by the teachers?

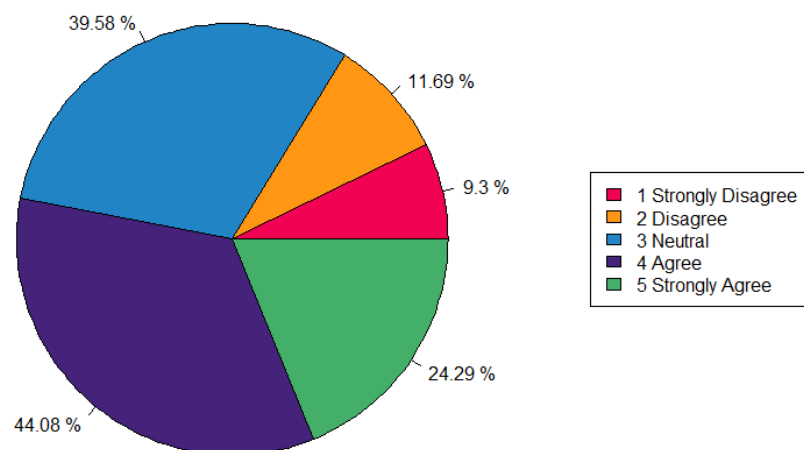


Option	Unfair	Usually unfair	Sometimes fair	Usually fair	Always fair
Response (%)	2.40	7.65	21.59	59.67	37.63

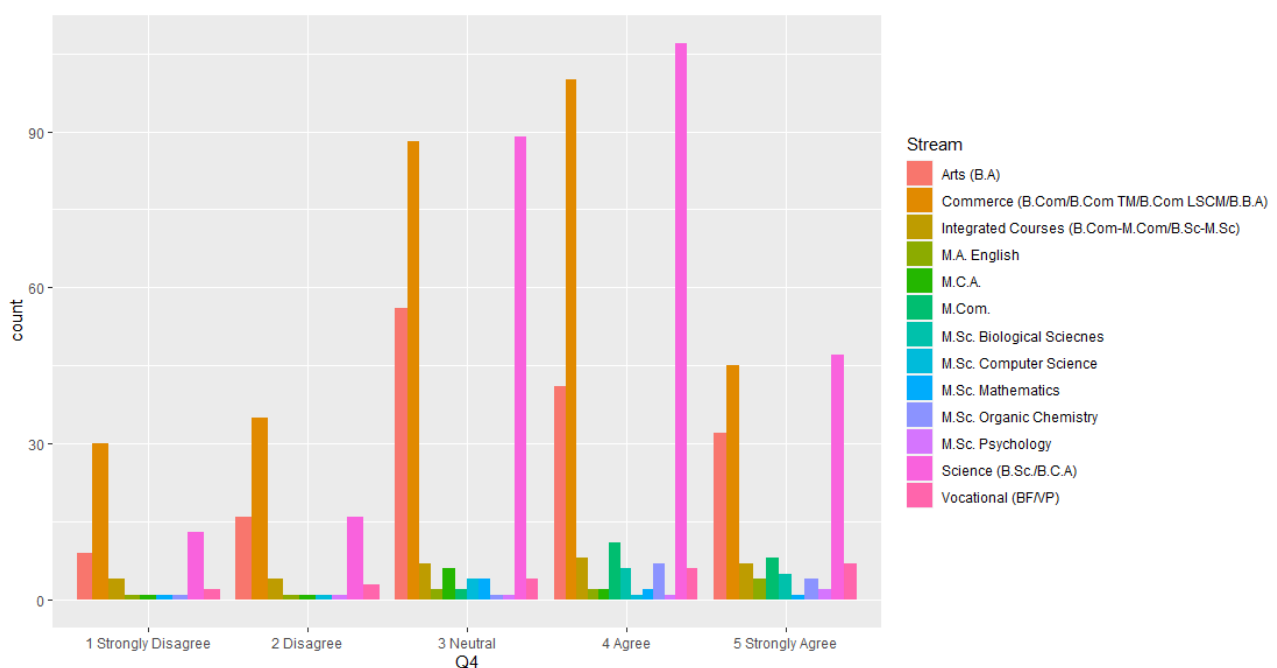


QUESTION 4

The institute takes active interest in promoting internship, student exchange and field visit opportunities for students.

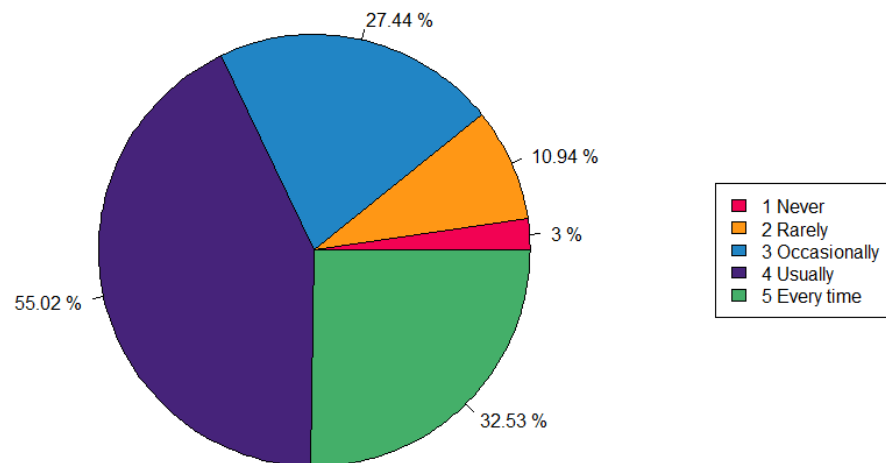


Option	Strongly disagree	Disagree	Neutral	Agree	Strongly agree
Response (%)	9.30	11.69	39.58	44.08	24.29

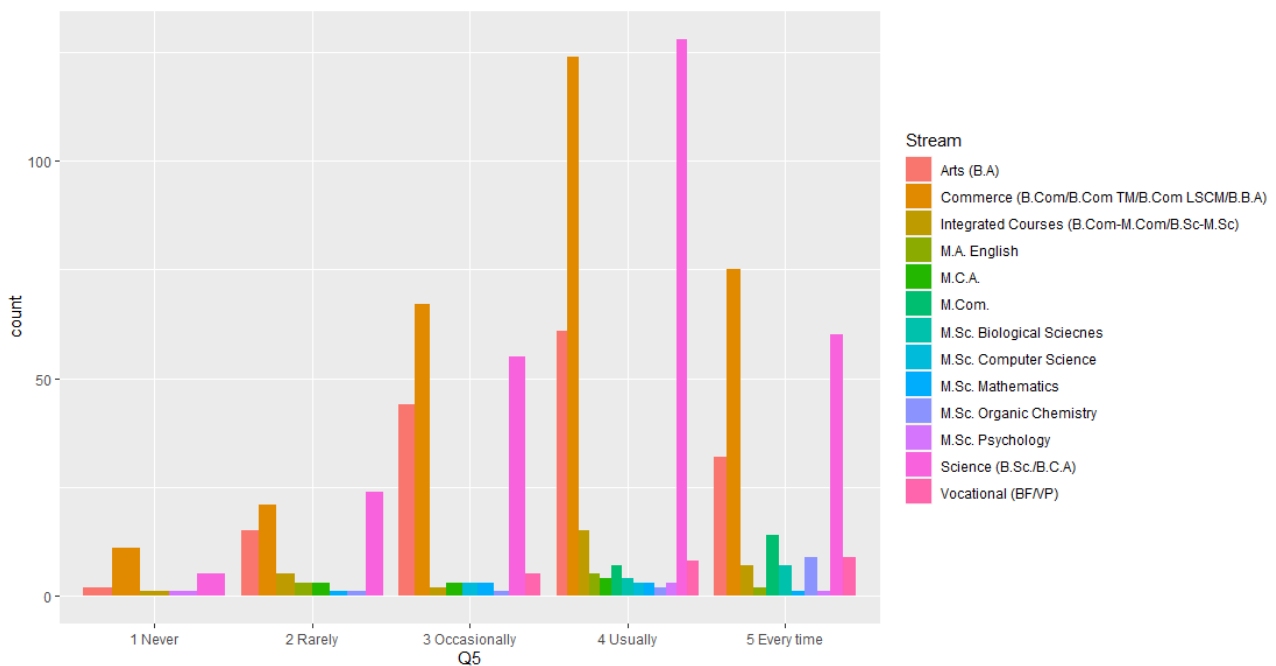


QUESTION 5

Are you informed of expected competencies, course outcomes and programme outcomes?

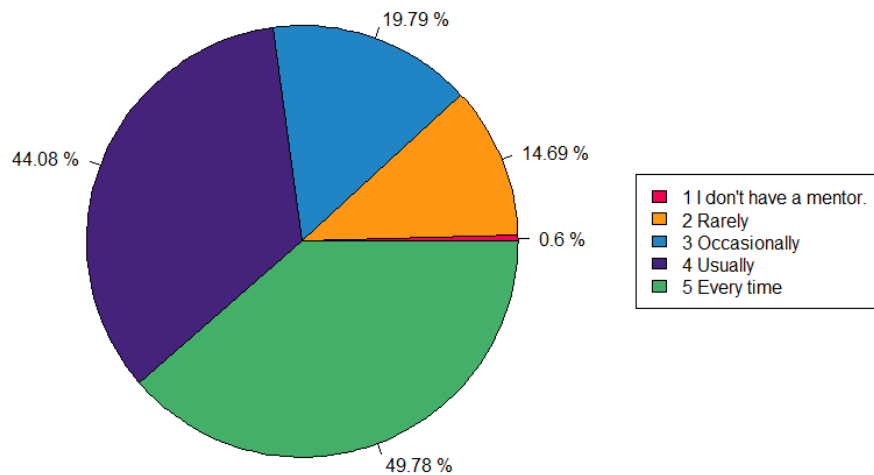


Option	Never	Rarely	Occasionally	Usually	Every time
Response (%)	3.00	10.94	27.44	55.02	32.53

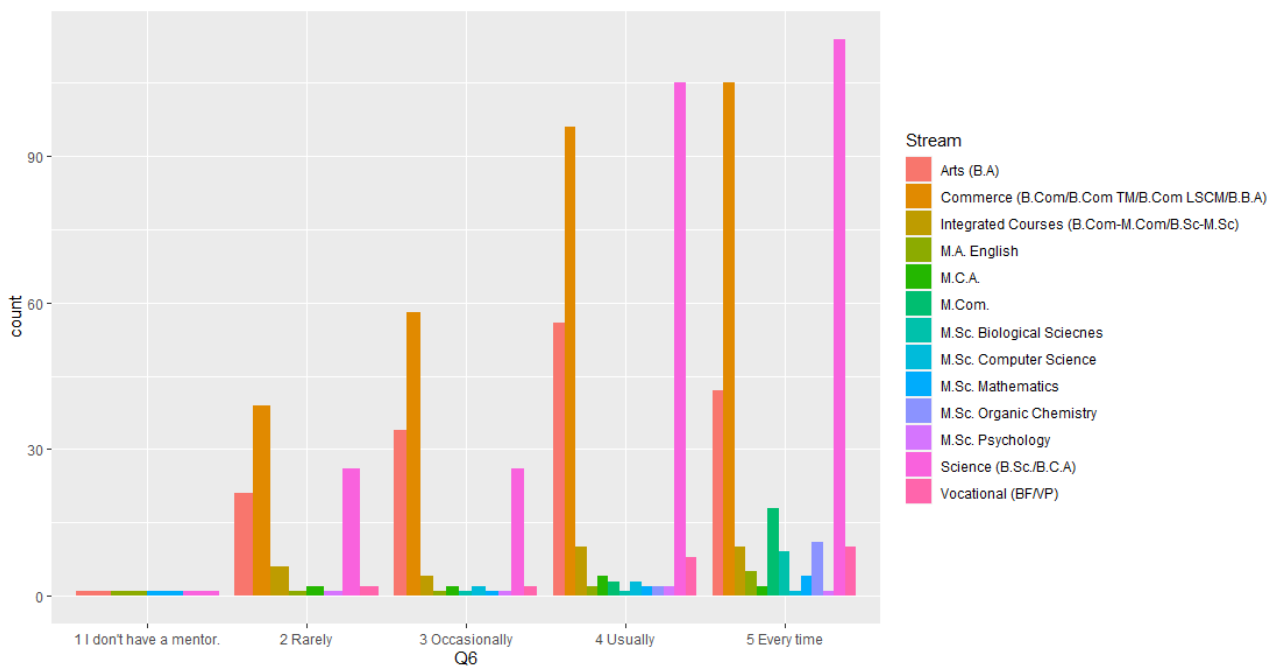


QUESTION 6

Your mentor/Teacher does a necessary follow up with you regarding assigned tasks.

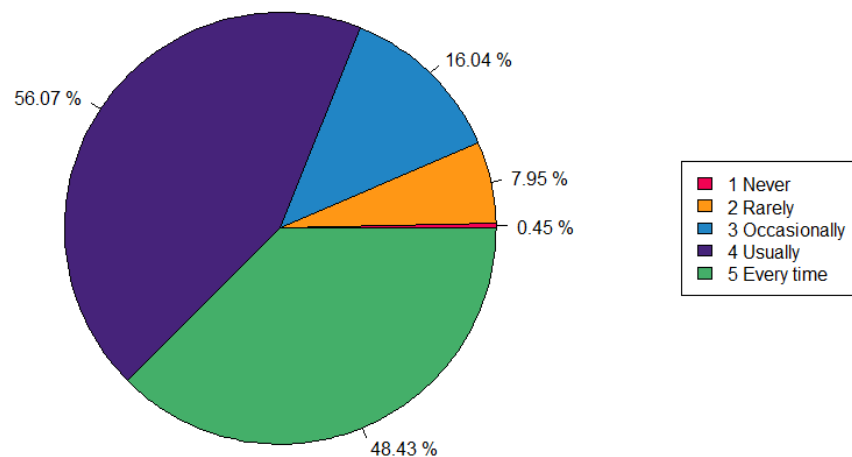


Option	I don't have a mentor	Rarely	Occasionally	Usually	Every time
Response (%)	0.60	14.69	19.79	44.08	49.78

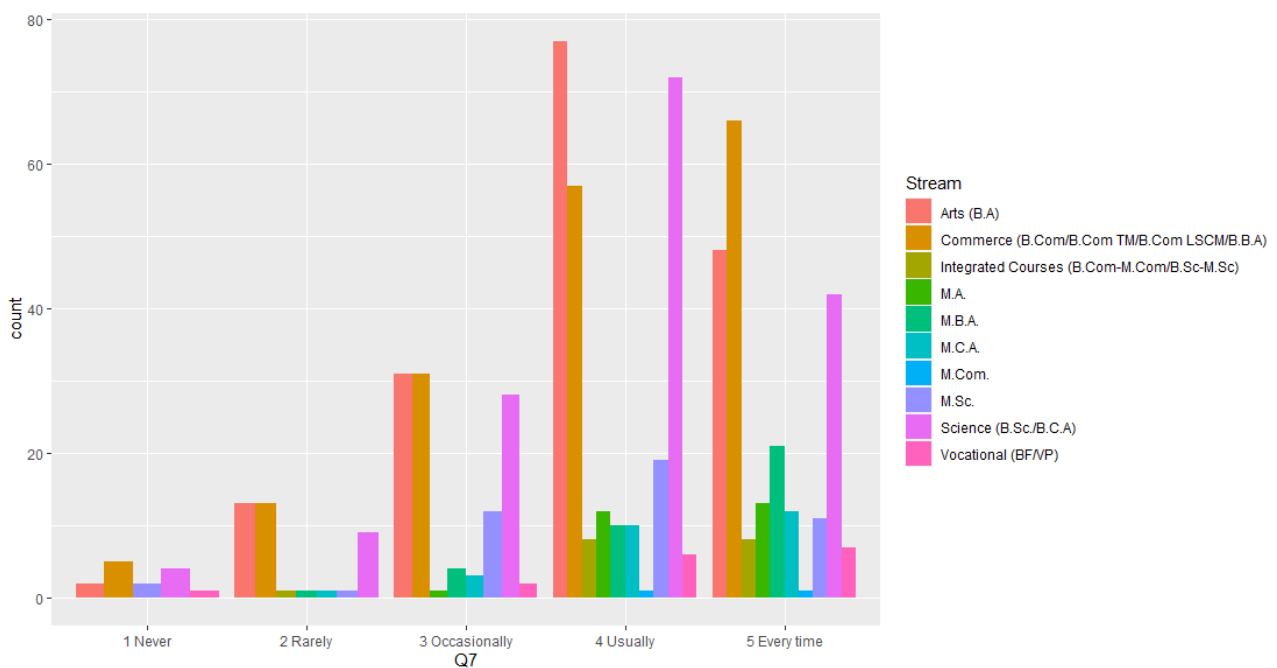


QUESTION 7

Teachers illustrate concepts through examples and applications.

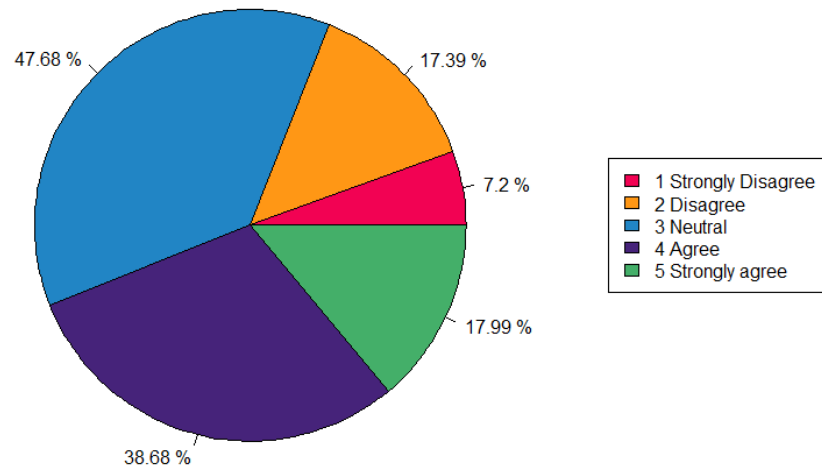


Option	Never	Rarely	Occasionally	Usually	Every time
Response (%)	0.45	7.95	16.04	56.07	46.43

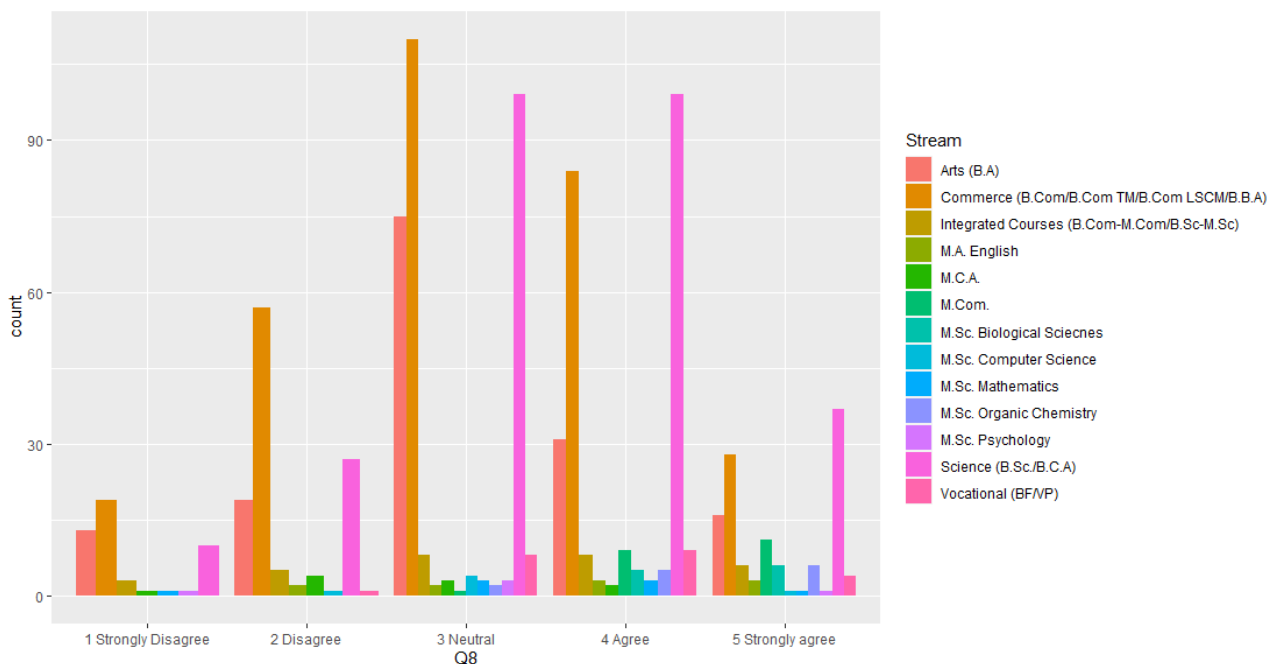


QUESTION 8

Teachers are able to identify your weaknesses and help you to overcome them.

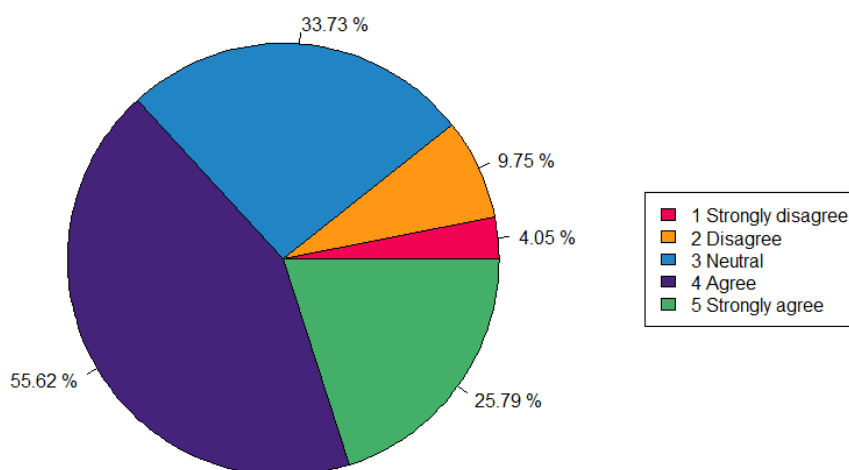


Option	Strongly disagree	Disagree	Neutral	Agree	Strongly agree
Response (%)	7.20	17.39	47.68	38.68	17.99

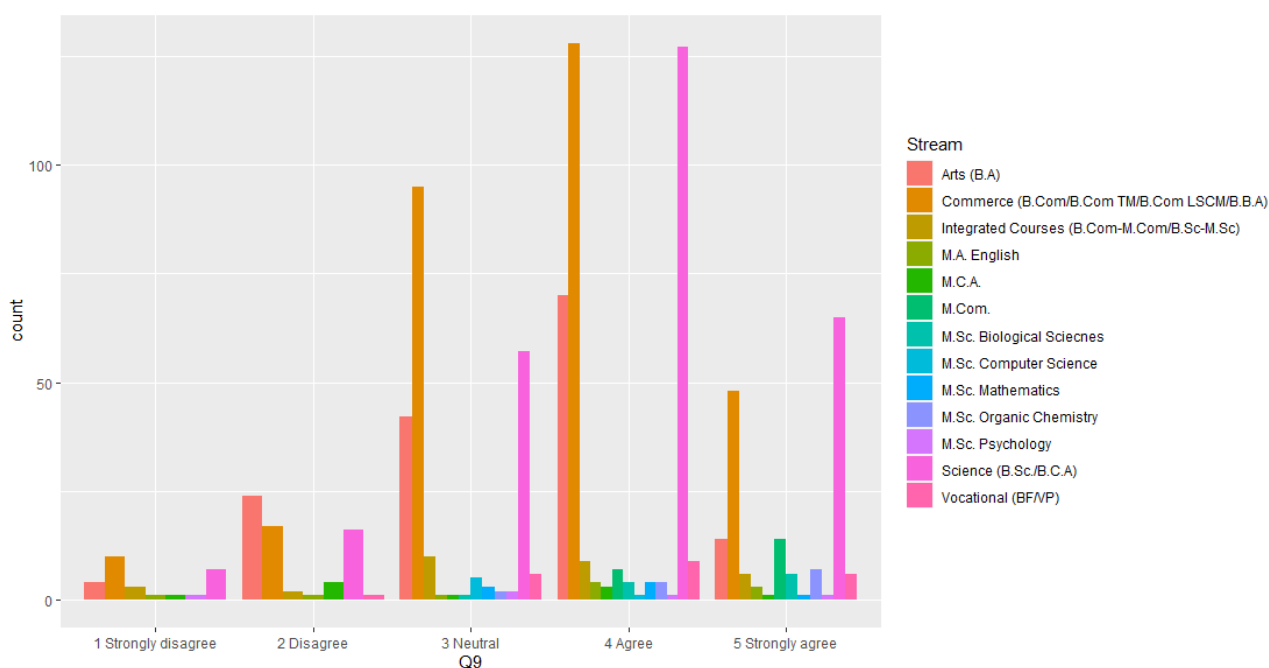


QUESTION 9

The institution makes an effort to engage students in the monitoring, review and continuously quality improvement of the teaching learning process.

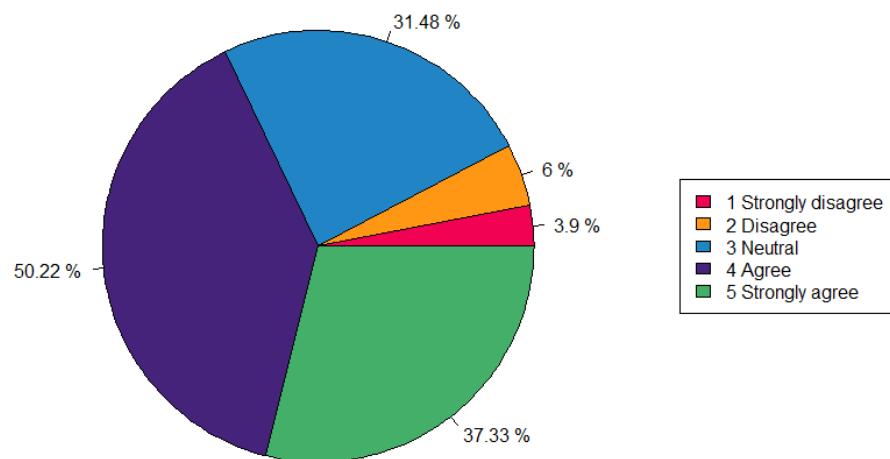


Option	Strongly disagree	Disagree	Neutral	Agree	Strongly agree
Response (%)	4.05	9.75	33.73	55.62	25.79

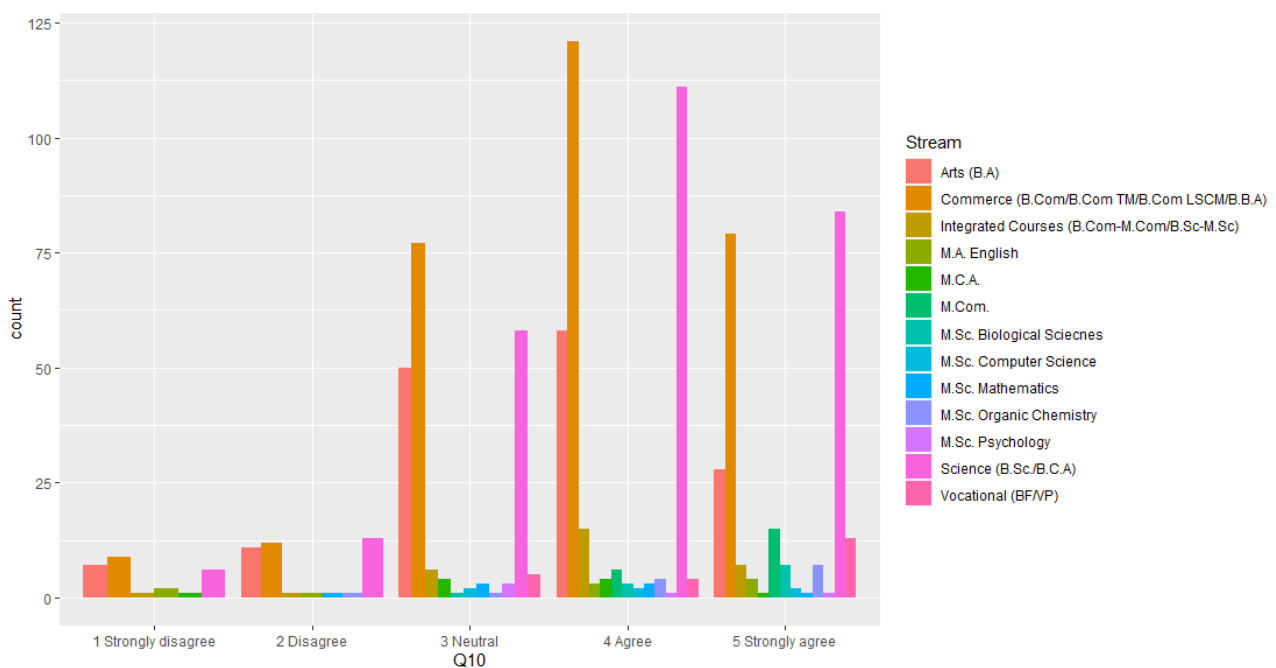


QUESTION 10

Teachers encourage you to participate in extra-curricular activities.

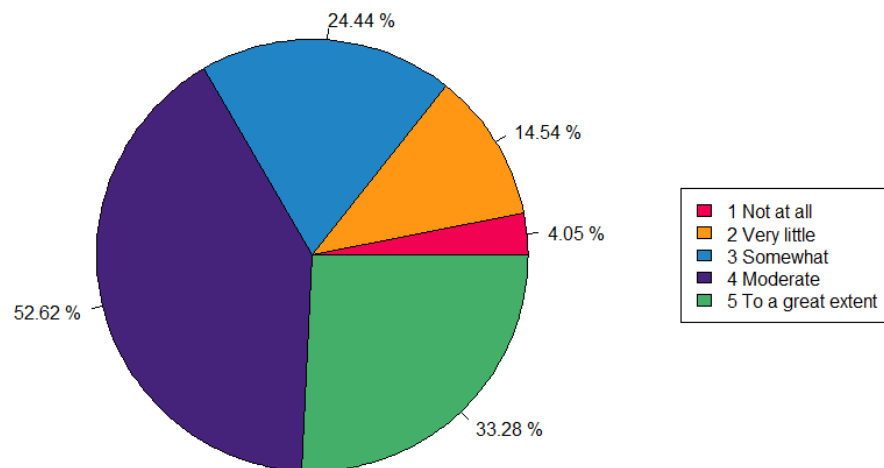


Option	Strongly disagree	Disagree	Neutral	Agree	Strongly agree
Response (%)	3.90	6.00	31.48	50.22	37.33

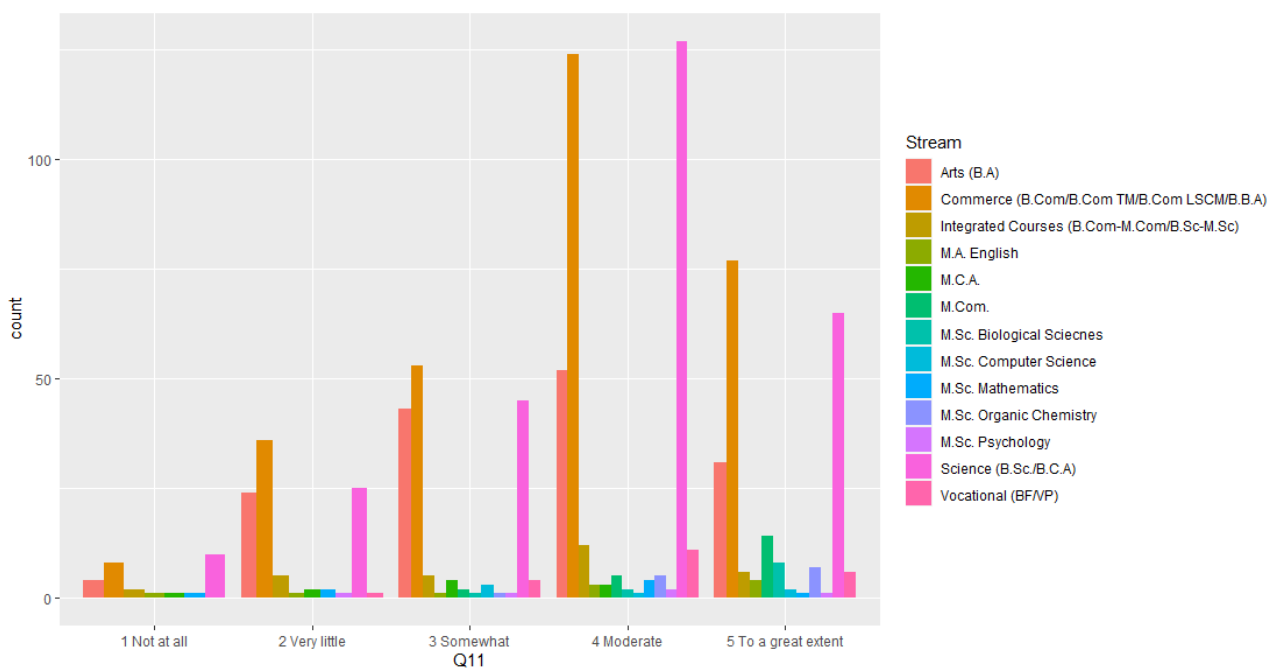


QUESTION 11

Efforts are made by the institute/teachers to inculcate soft skills, life skills and employability skills to make you ready for the world of work.

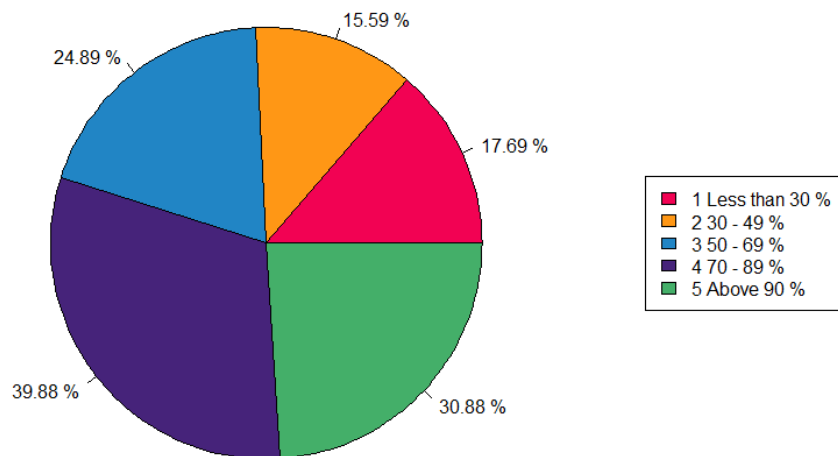


Option	Strongly disagree	Disagree	Neutral	Agree	Strongly agree
Response (%)	4.05	14.54	24.44	52.62	33.28

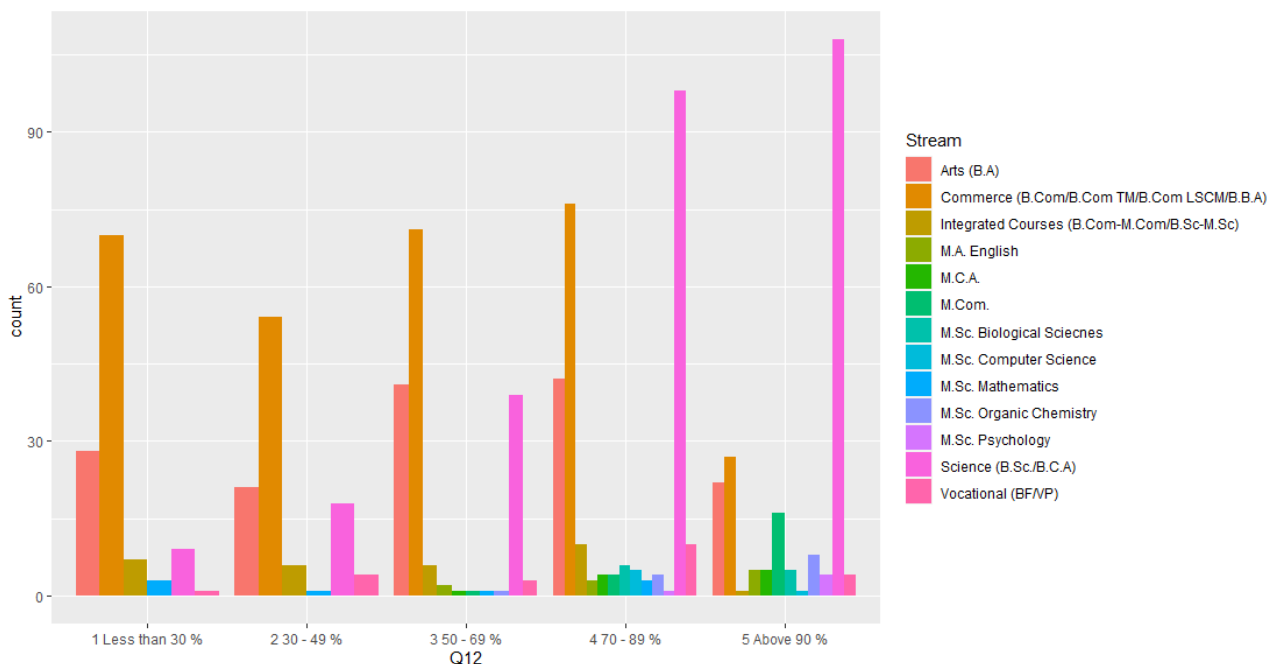


QUESTION 12

What percentage of your teachers use ICT tools such as LCD projector, multimedia etc. while teaching?

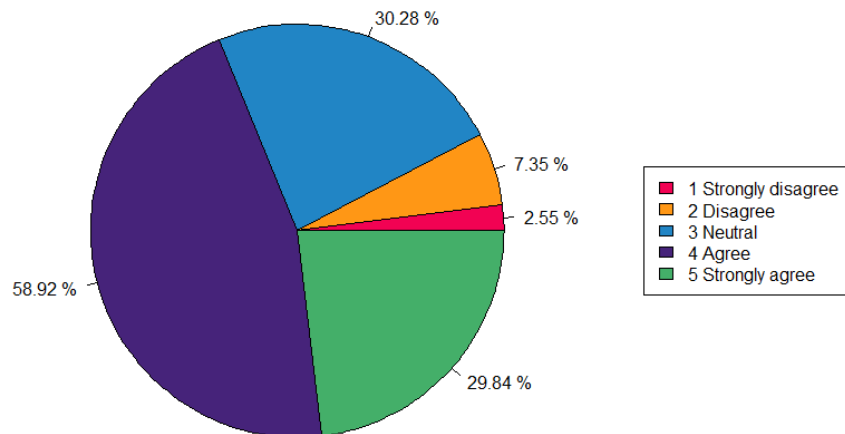


Option	Less than 30 %	30 - 49 %	50 - 69 %	70 - 89 %	Above 90 %
Response (%)	17.69	15.59	24.89	39.88	30.88

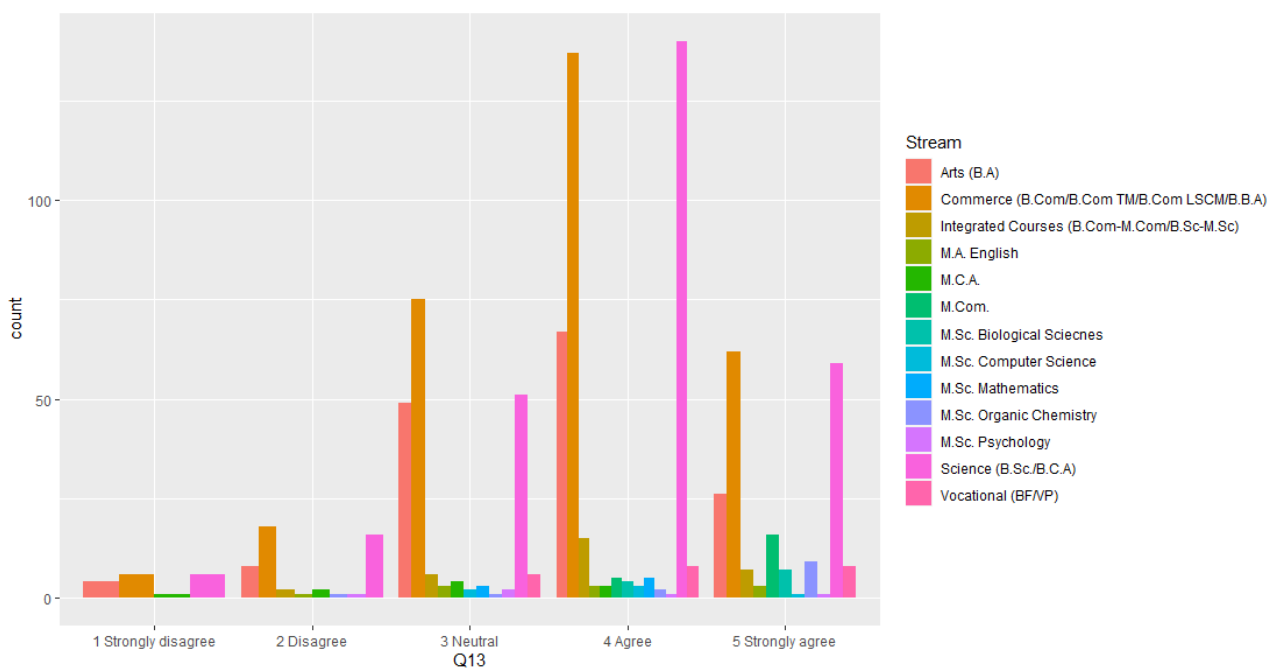


QUESTION 13

The overall quality of teaching-learning process in your institute is very good.

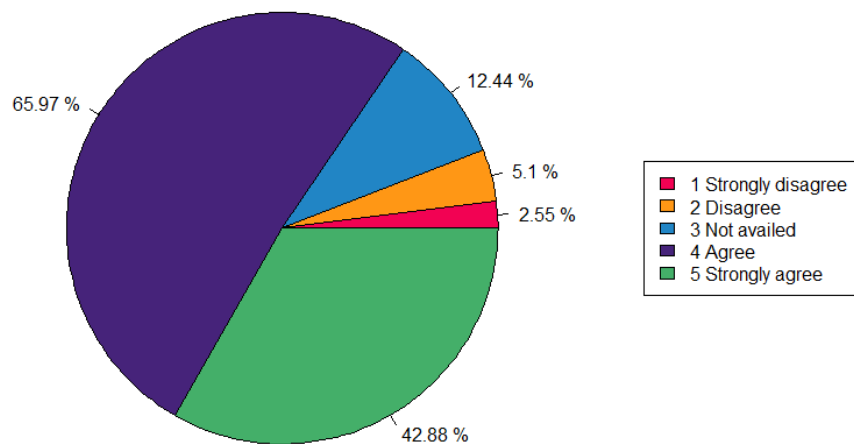


Option	Strongly disagree	Disagree	Neutral	Agree	Strongly agree
Response (%)	2.55	7.35	30.28	58.92	29.84

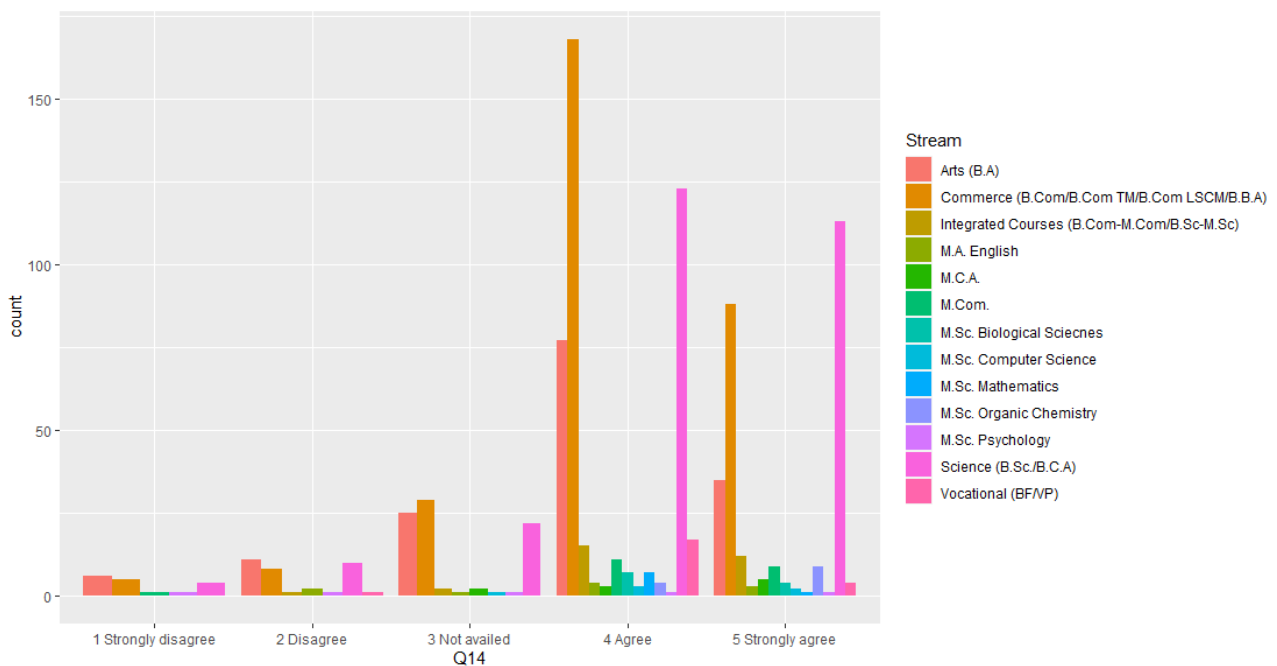


QUESTION 14

Does the library have sufficient reference books/journals/resources in your subject domain?

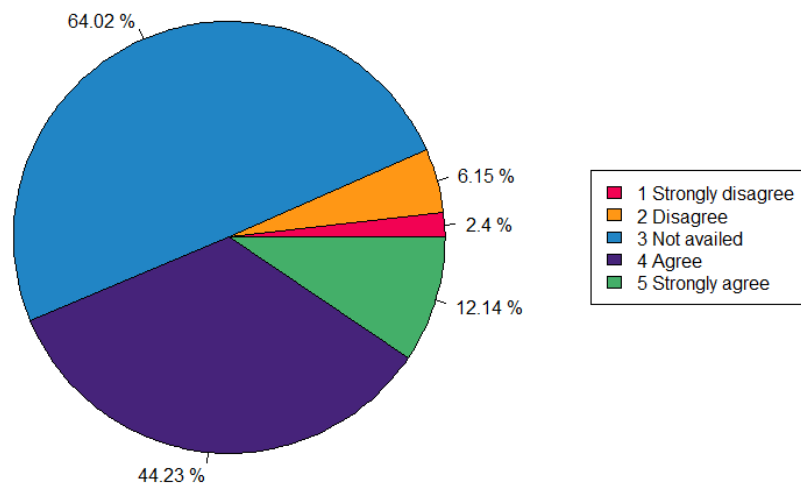


Option	Strongly disagree	Disagree	Not availed	Agree	Strongly agree
Response (%)	2.55	5.10	12.44	65.97	42.88

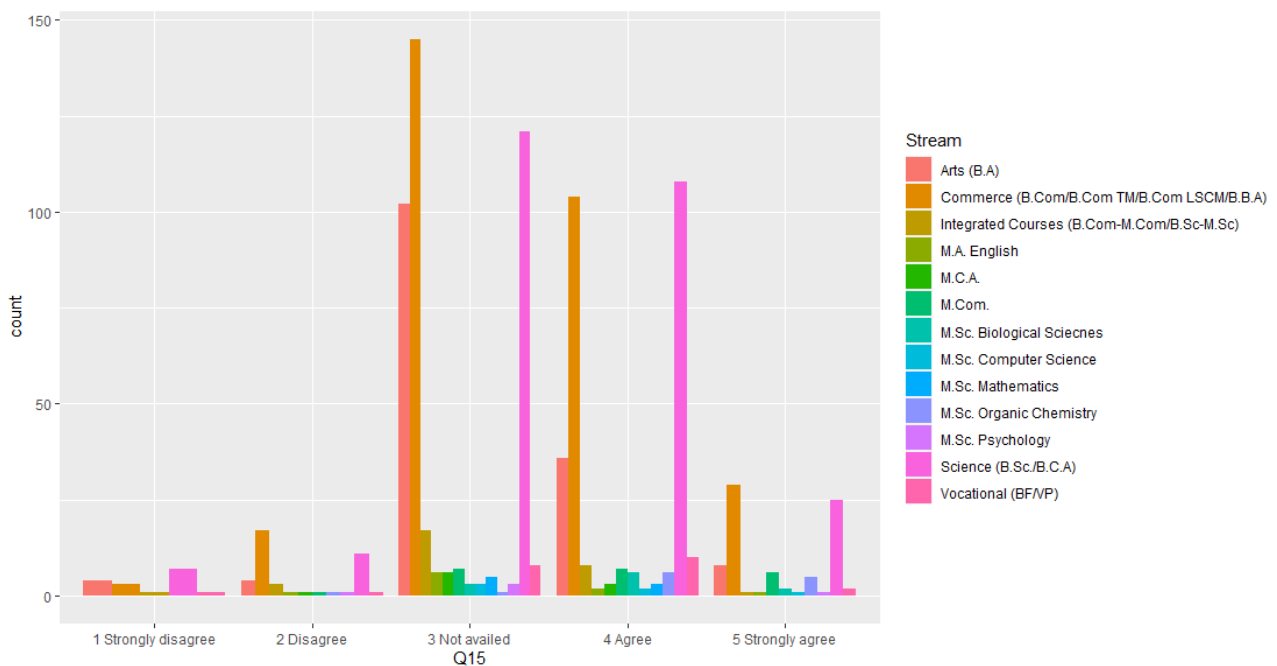


QUESTION 15

Have you availed the grievance mechanism? If YES, has your concern been addressed?

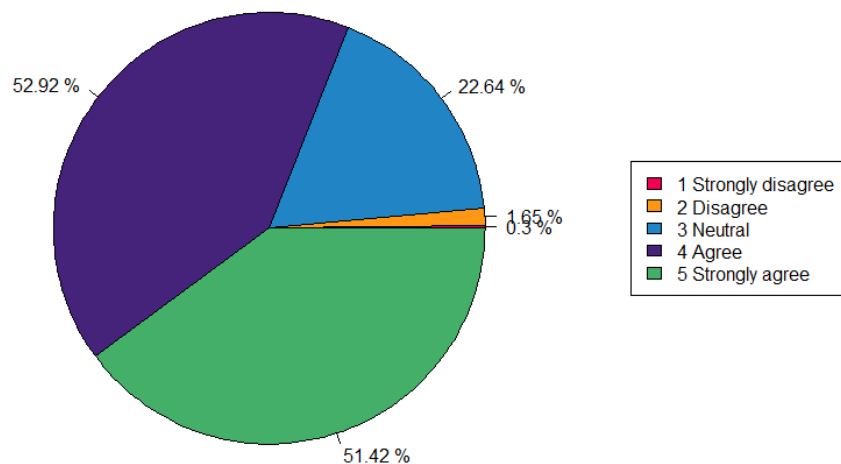


Option	Strongly disagree	Disagree	Not availed	Agree	Strongly agree
Response (%)	2.40	6.15	64.02	44.23	12.14

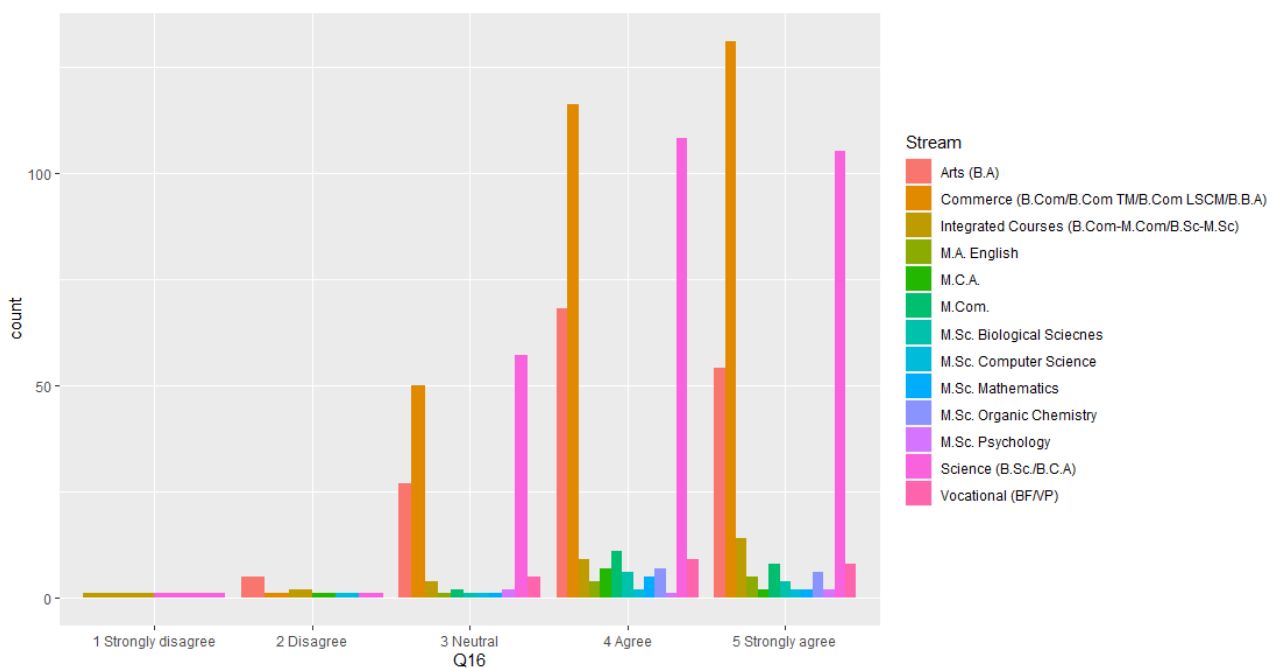


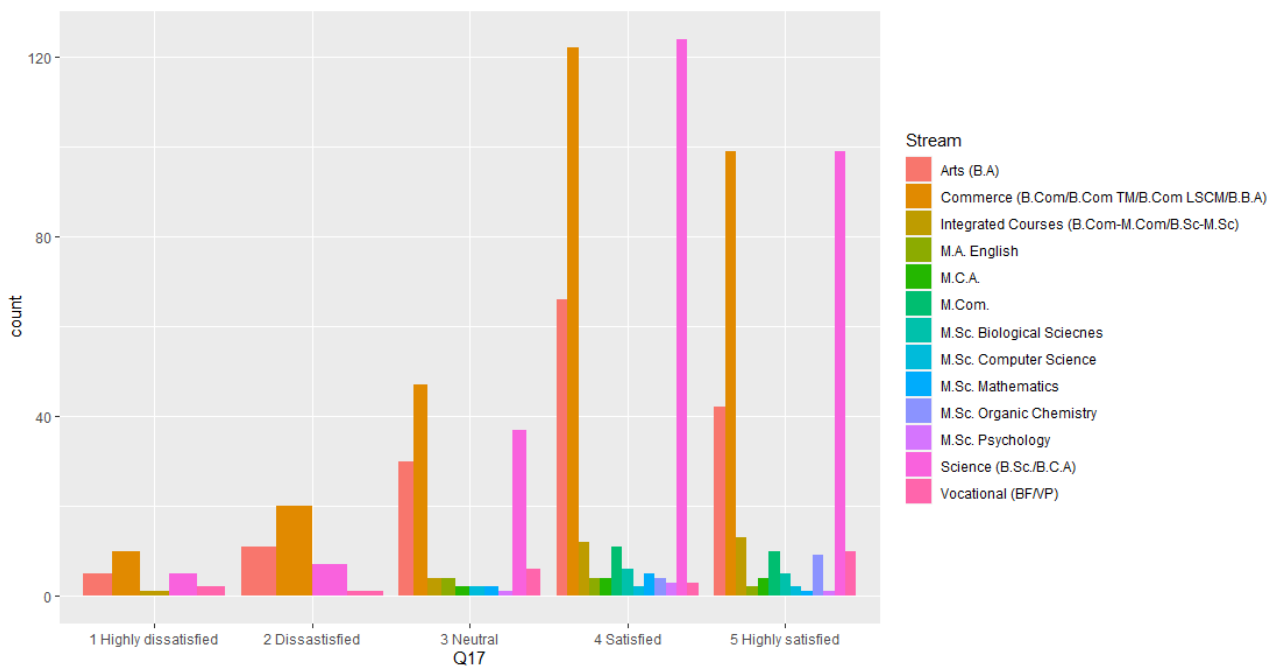
QUESTION 16

Do you want the college to offer more programmes in different streams?



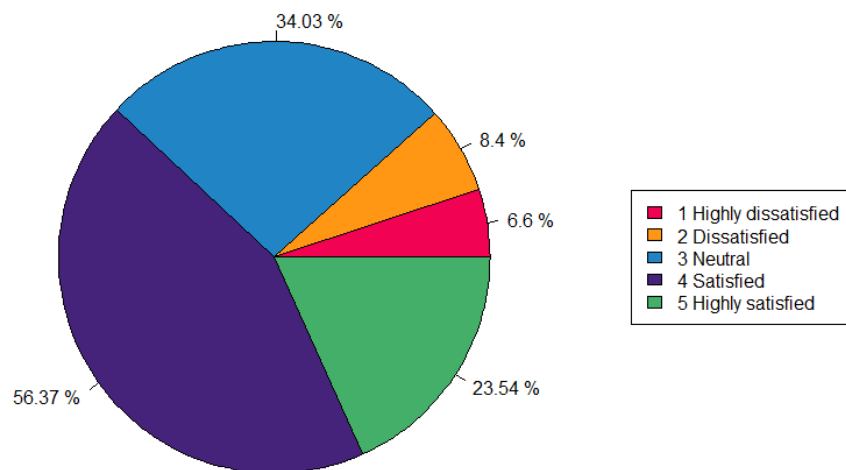
Option	Strongly disagree	Disagree	Neutral	Agree	Strongly agree
Response (%)	0.30	1.65	22.64	52.92	51.42



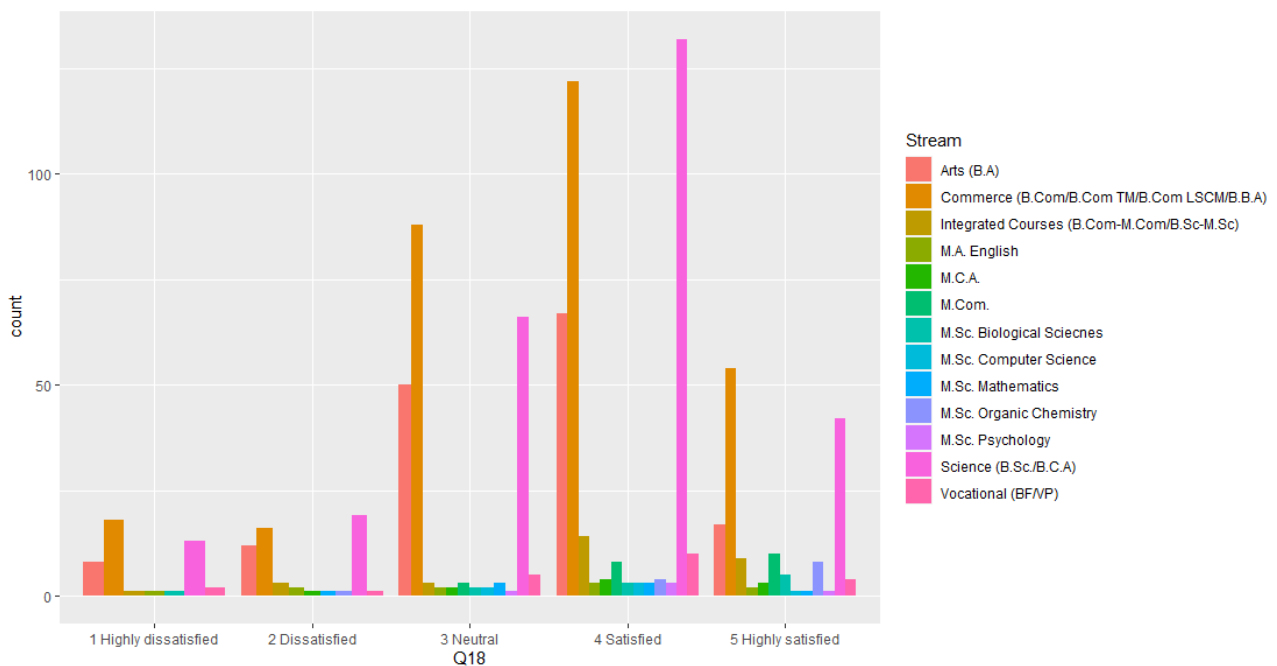


QUESTION 18

How satisfied are you with your interaction with the administrative staff?

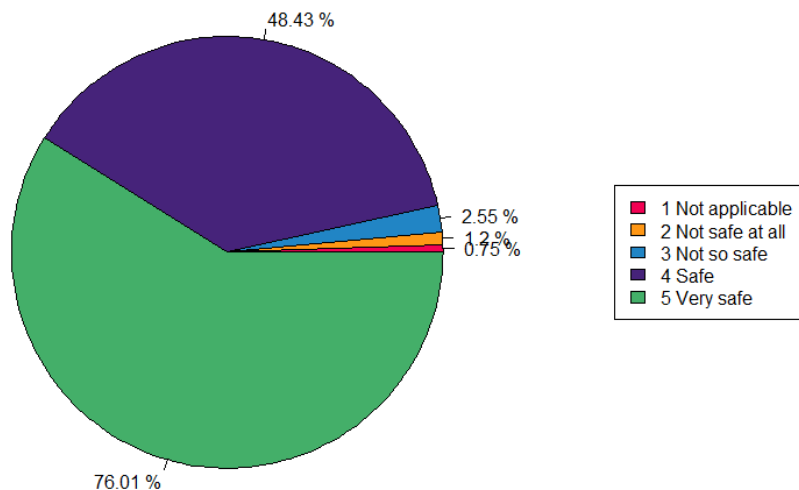


Option	Highly dissatisfied	Dissatisfied	Neutral	Satisfied	Highly satisfied
Response (%)	6.60	8.40	34.03	56.37	23.54



QUESTION 19

How comfortable and safe do you feel on campus?



Option	Not applicable	Not safe at all	Not so safe	Safe	Very safe
Response (%)	0.75	1.20	2.55	48.83	76.01

